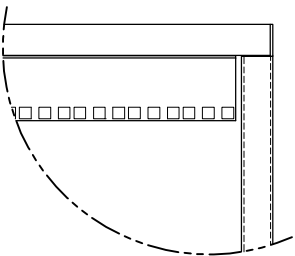


**RAPID-NET SERIES: 84.50 x 24.00 x 42.00**  
**PART NO: CRN384EQB1BSV3**

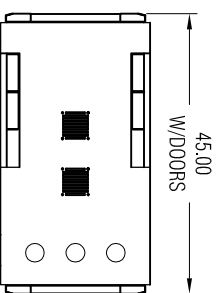
**MOUNTING RAILS: 15U (45U TOTAL)**

- M6 CAGE-NUT RAILS, 15U/COMPARTMENT
- (2) PAIR, 19" EIA-310-D COMPLANT
- (1) PAIR RAPID NET RAILS PER COMPARTMENT
- 30PC M6 HARDWARE INCLD.
- RAILS SET AT 29.00" DEEP

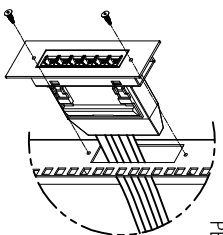


**TOP VIEW**

- VENTED, 2-FAN
- W/CABLE CHANNELS
- (3X) CABLE KNOCK-OUTS



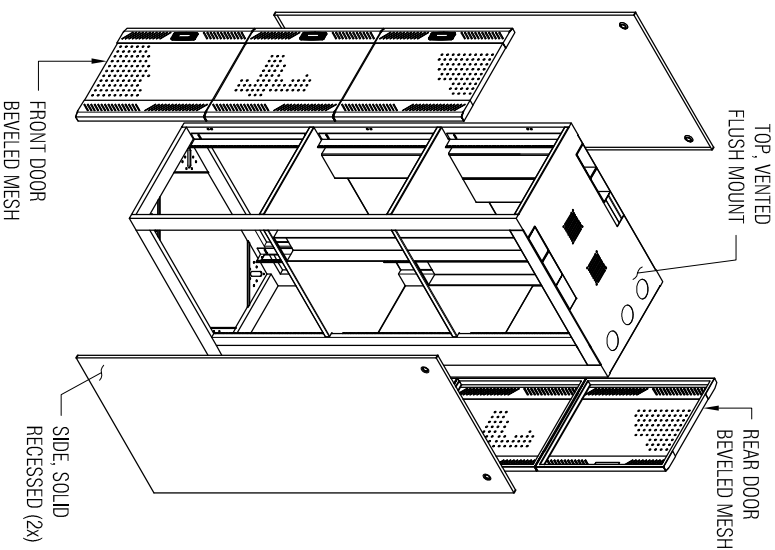
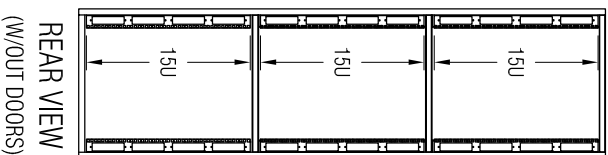
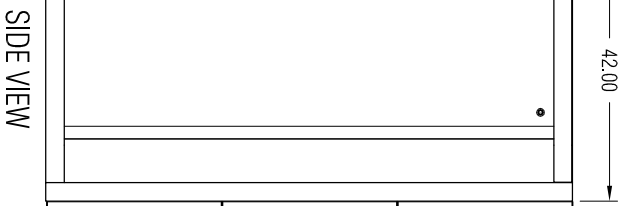
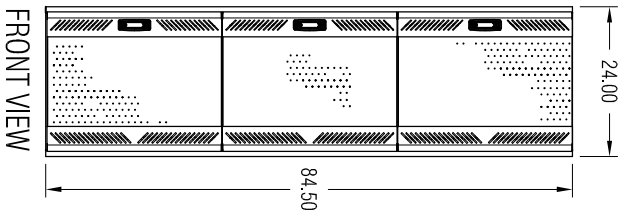
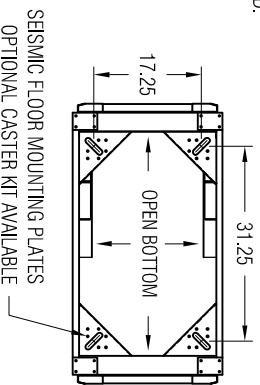
**MOUNTING RAILS**  
(REAR RAILS ONLY)



8 RAPID-NET CASSETTES PER COMPARTMENT  
 (4 PER RAIL)  
 \*\*NOTE: BRACKETS ARE SOLD SEPARATE  
 (ARN4PPH-3F: 4-PORT; ARN6PPH-3F: 6-PORT)  
 (ARN4PPH-3F: 4-PORT; ARN6PPH-3F: 6-PORT)

**BOTTOM VIEW**

- FLOOR MOUNT DIMS: 17.25 x 31.25
- (4) FLOOR LEVELERS INCLD.



REV	ECD	DATE	REVISIONS	DESCRIPTION
---	---	---	---	---

**DIMENSIONS**

- RAPID-NET FRAME
- 3 x 1 TUBULAR STEEL
- HEIGHT: 84.50
- WIDTH: 24.00
- DEPTH: 42.00

**MOUNTING RAIL**

- 15U, L-RACK ANGLES ANGLES
- CAGE-NUT, M6
- EIA SPACING: 3/8 x 3/8 x 1/2
- 19" RACKABLE
- RAILS SET AT 29.00 DEPTH

**DOORS F/B**

- HI-FLO MESH, 88% AIR-FLOW
- REINFORCED BEVELED DESIGN
- PREMIUM LOCK, KEYPED ALIKE
- REMOVABLE, 180 DEGREE SWING
- DIMS: 28.00H x 22.38D x 1.31W

**ACCESSORIES**

- SOLD SEPARATE
- BLACK TEXTURE
- CLASSIFICATION
- ZONE 4
- 19" EIA-310-D COMPLANT
- ROHS COMPLANT

**WT CAPACITY**

3000 LBS STATIC

**SIDE PANEL**

- SOLID, RECESSED, LOCKING
- ZERO CLEARANCE COUPLING
- DIMS: 78.45H x 26.88W x 1.00D

**TOP PANEL**

- VENTED, WELD-ON
- 2-FAN READY
- CABLE CHANNELS

**DAMAC** PRODUCTS INC. 1000 WILSON AVE. FORT WORTH, TX 76102  
 817.335.1111 FAX: 817.335.1112  
 1000 WILSON AVE. FORT WORTH, TX 76102  
 817.335.1111 FAX: 817.335.1112

**CABINET, RAPID-NET SERIES**  
 84.50 x 24.00 x 42.00  
**W/CAGE-NUT RAILS**

PART NO: CRN384EQB1BSV3  
 DRAWN BY: DATE: 11/10/2008  
 SHEET: 1 OF 1  
 SCALE: N/A  
 MATERIAL: N/A  
 FINISH: EPOXY POWDER-COAT  
 MAX BEND R=0.000 RELIEF=0.060 A/R  
 UNLESS OTHERWISE SPECIFIED